

connector for loop walking circuit

dog park

**ARTS & ENTERTAINMENT HUB**

old signature theater

3700 building

outdoor gathering to serve arts hub

opportunities for further acquisition and arts programming

**park development**

- court sports w/ parking under
- playground
- pavilion

eastern gateway (include Weenie Beanie)

new pedestrian bridge

RIPARIAN ZONE

separated walking path along 4MR Trail

existing parking to remain

ARTS WALK

preserve ex. trees

WETA site

future pedestrian bridge at Shirlington Rd.

**LEGEND**

- Informal open space
- Formal open space
- Indoor
- Arts Hub
- Expansion Opportunities
- Dog Park
- Pavilion
- Playground
- Buffer/Rain Garden
- Riparian Zone
- Regulatory Floodway
- Stream
- 100-year Floodplain
- Riparian Trail
- Promenade
- Vehicular
- Gateway/entrance



**Alternative 1: 4MRV Parks Master Plan**

DRAFT 03/01/17

4 mile run valley

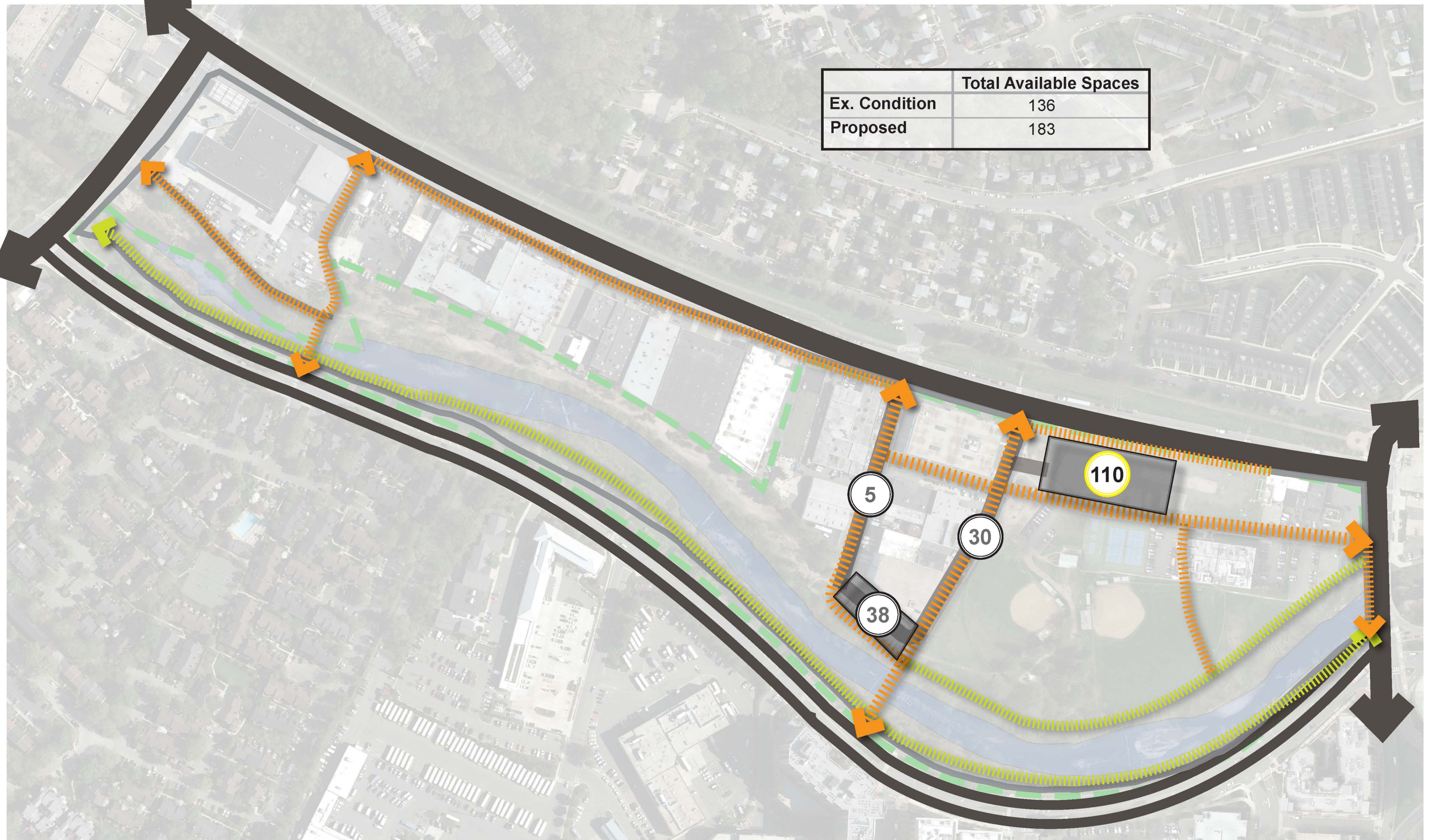
ARLINGTON VIRGINIA

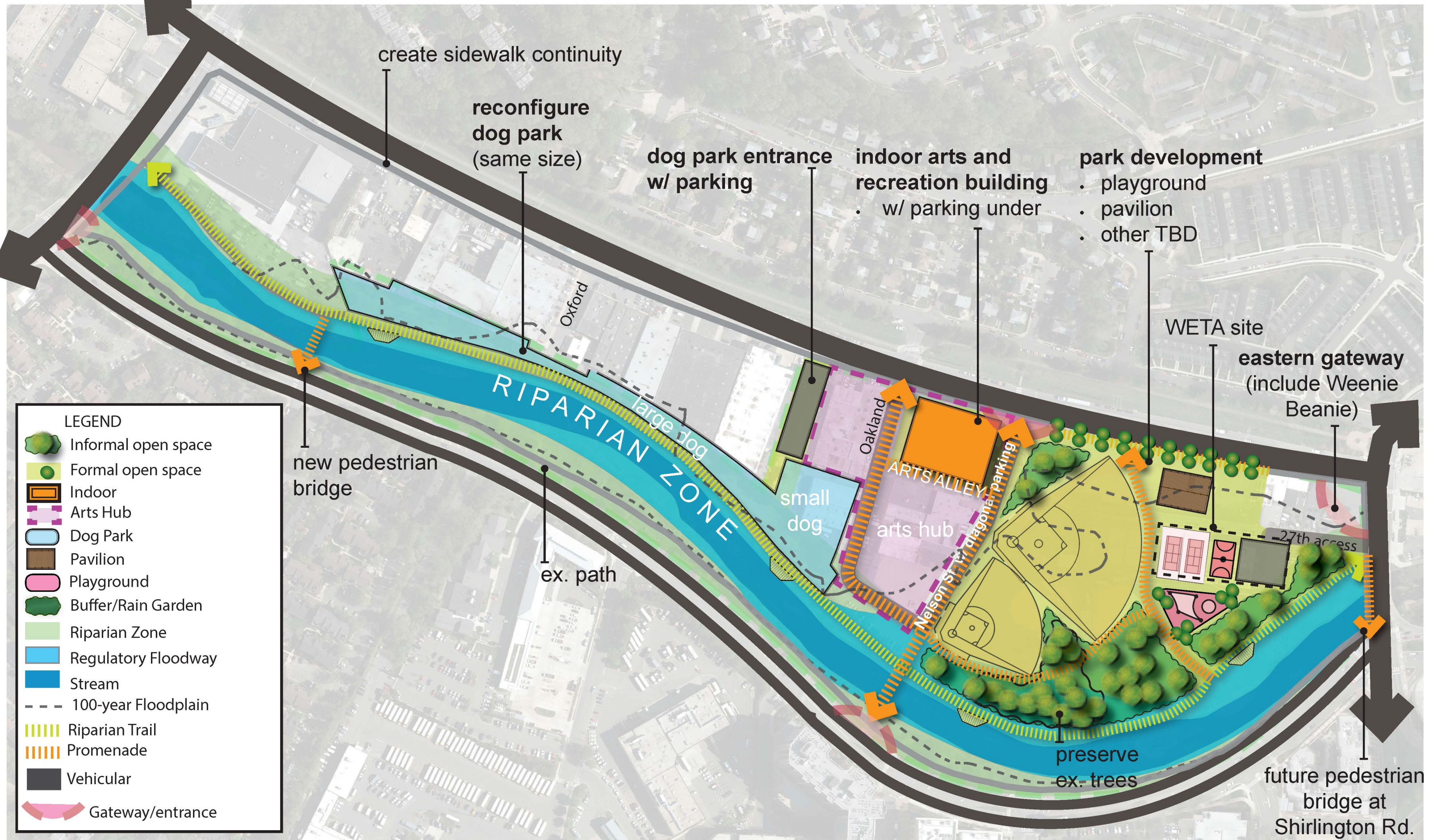
L/KLA

Lardner/Klein Landscape Architects, P.C.

In Association With:  
 RK&K  
 Grimm + Parker Architects  
 Kittelson and Associates, Inc.  
 Partners for Economic Solutions

	Total Available Spaces
Ex. Condition	136
Proposed	183





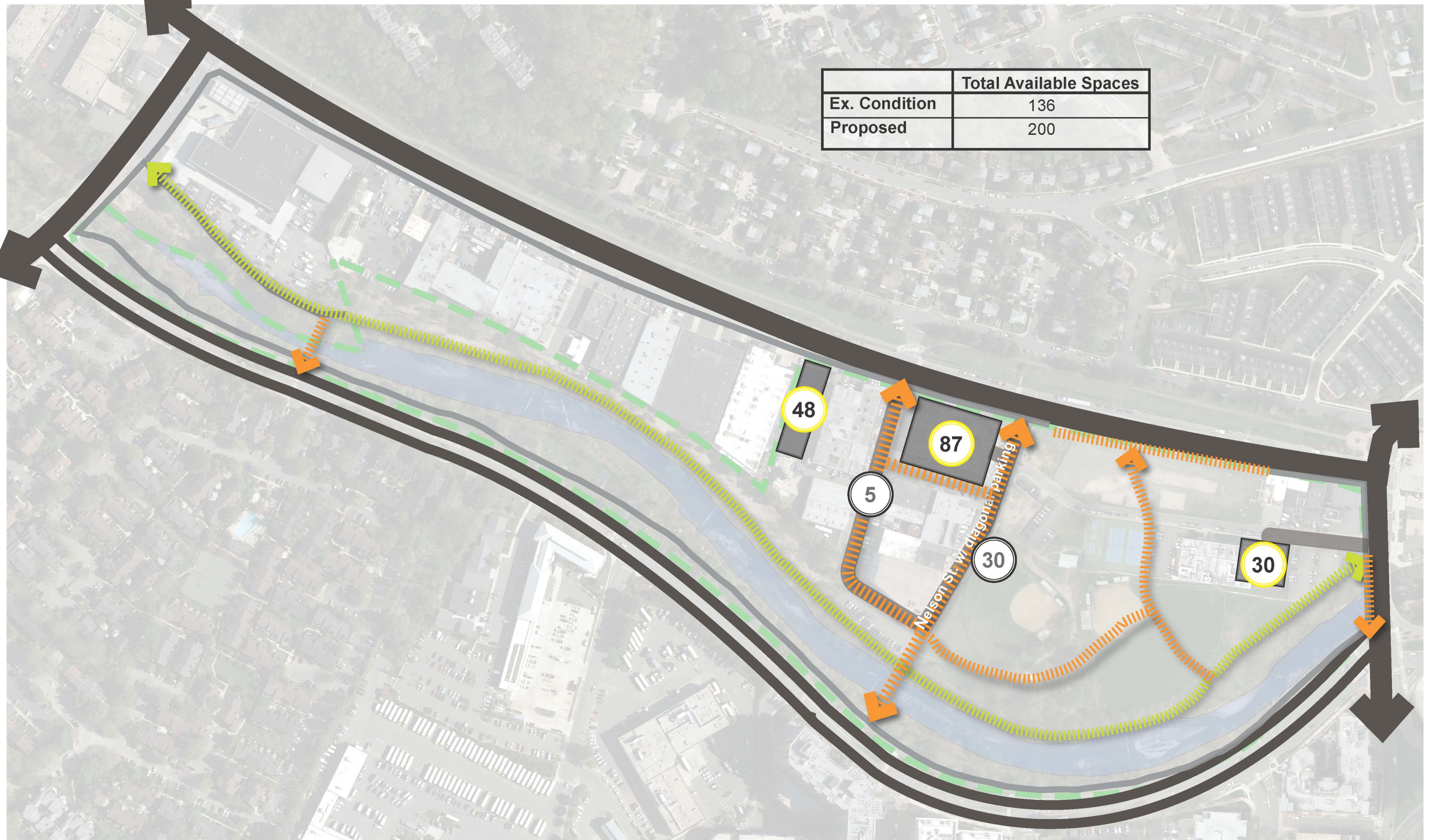
**Alternative 2: 4MRV Parks Master Plan**

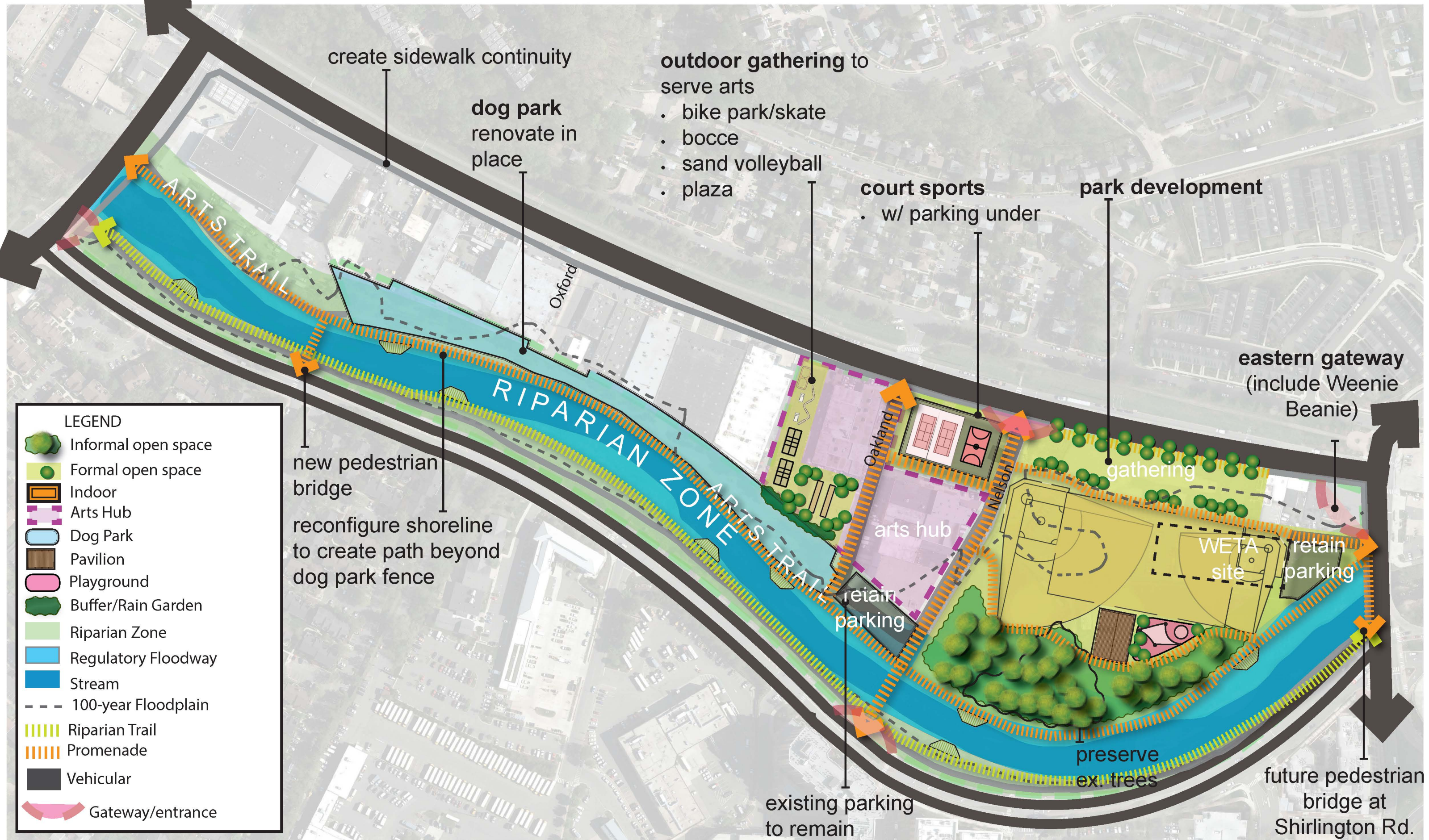
DRAFT 03/01/17



In Association With:  
 RK&K  
 Grimm + Parker Architects  
 Kittelson and Associates, Inc.  
 Partners for Economic Solutions

	Total Available Spaces
Ex. Condition	136
Proposed	200





create sidewalk continuity

dog park renovate in place

- outdoor gathering to serve arts**
- bike park/skate
  - bocce
  - sand volleyball
  - plaza

**court sports**

- w/ parking under

**park development**

**eastern gateway**  
(include Weenie Beanie)

new pedestrian bridge

reconfigure shoreline to create path beyond dog park fence

existing parking to remain

preserve ex. trees

future pedestrian bridge at Shirlington Rd.

**LEGEND**

- Informal open space
- Formal open space
- Indoor
- Arts Hub
- Dog Park
- Pavilion
- Playground
- Buffer/Rain Garden
- Riparian Zone
- Regulatory Floodway
- Stream
- 100-year Floodplain
- Riparian Trail
- Promenade
- Vehicular
- Gateway/entrance

**Alternative 3: 4MRV Parks Master Plan**



DRAFT 03/01/17

4 mile run valley

ARLINGTON VIRGINIA

**L/KLA**

**Lardner/Klein**  
Landscape Architects, P.C.

In Association With:  
RK&K  
Grimm + Parker Architects  
Kittelson and Associates, Inc.  
Partners for Economic Solutions

	Total Available Spaces
Ex. Condition	136
Proposed	169

